

Bulk Containers

4 Series

These containers are one of the most durable and versatile material handling containers in the industry.



- 4-Way entry replaceable pallet bolted/welded on a high quality one-piece design.
- Reinforced rim.
- Flat bottom with smooth flat interior surfaces for easy product flow and cleaning.
- Rounded interior corners to alleviate product collection points.
- Ergonomically placed handles for easier container movement and reduction or elimination of vacuum by nesting.
- Nestable and stackable with lid.

***F-SP** is simply a free standing pallet that is compatible with the 4 Series containers.

MODEL	OUTSIDE DIMENSIONS	CUBIC FEET	GALLON CAPACITY	WEIGHT
F436	48" x 44" x 36"	30 cu/ft	225gal	140lbs
F438	48" x 44" x 38"	32 cu/ft	240gal	145lbs
F442	48" x 44" x 42"	37 cu/ft	275gal	150lbs
F445	48" x 44" x 45"	39 cu/ft	300gal	155lbs
F448	48" x 44" x 48"	42 cu/ft	325gal	170lbs
F456	48" x 44" x 56"	50 cu/ft	375gal	180lbs
F-4 Bolt-On PALLET	39" x 43" x 6"			45lbs
F-4 Bolt-On PALLET	39" x 43" x 6"			55lbs
F-SP PALLET	43" x 47" x 9"			55lbs

2 Series

Bulk containers with 2-Way accessibility featuring the latest in design to enhance quality and durability while maximizing the cost savings associated with the reusable containers.



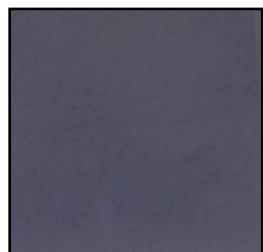
- High quality one-piece design.
- Reinforced rim.
- Channeled bottom, smooth interior surfaces for easy product flow and cleaning.
- Rounded interior corners to alleviate product collection points.
- Unique angled leg design that helps prevent forklift damage by allowing the fork tines to deflect off the leg instead of breaking or cutting the container.
- Ergonomically placed handles for easier container movement and reduction or elimination of vacuum by nesting.
- Nestable and stackable with lid.

MODEL	OUTSIDE DIMENSIONS	CUBIC FEET	GALLON CAPACITY	WEIGHT
F233	41" x 41" x 33"	29 cu/ft	218gal	80lbs
F236	47" x 43" x 36"	34 cu/ft	255gal	100lbs
F245	47" x 43" x 45"	42 cu/ft	310gal	110lbs
F251	43" x 43" x 51"	44 cu/ft	330gal	120lbs

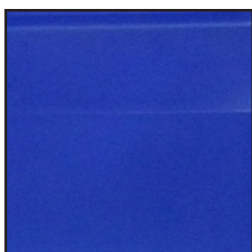
Color

With 15 standard colors to choose from, you can coordinate or brand your containers. Colors do not crack, chip or fade. Virgin plastic is offered in different pigments; recycled plastic is only available in black. Colors may vary depending on the size of the container.

(Note: Due to the many variations in monitors and browsers, actual product color may vary from the images shown.)



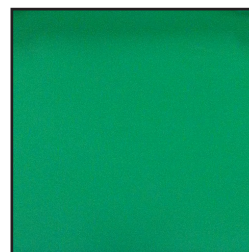
**Fibertech
Blue**



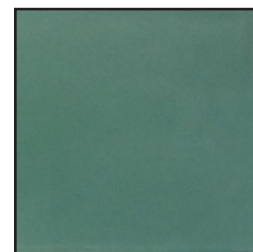
Royal Blue



Dolphin Blue



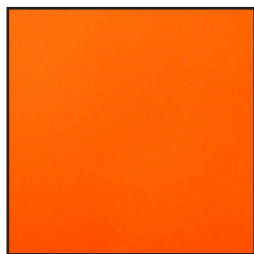
**Emerald
Green**



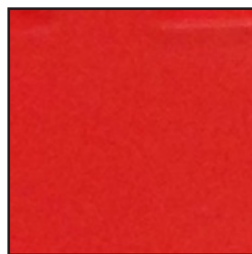
Forest Green



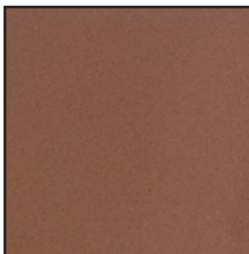
Safety Yellow



Safety Orange



Fire Red



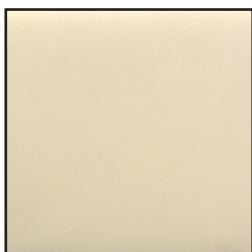
Brown



Tan



**Suede
Leather**



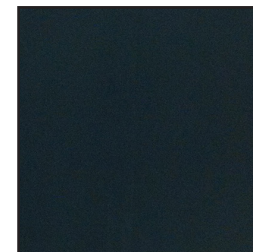
Malted Milk



**Natural
Translucent**



**Battleship
Gray**



Black

Custom colors are available in larger quantities and will require an additional upcharge. Custom or color matching can be done with a provided sample, or specific Pantone. To request color chips samples or to find out more about custom colors, please contact Pro Storage Solutions at 1-866-7996.



*LET US ENGINEER THE SOLUTION
YOU NEED*

www.pro-storagesolutions.com
1-866-216-7996