

START WITH A STANDARD BIN AND THEN...

**ADD LIDS & LATCHES**

Lids keep your contents clean, contained, and protected from the environment.

**ADJUST HEIGHT, LENGTH, OR WIDTH**

Size is everything when it comes to efficiency in handling, storing, and moving goods. Use a standard bin as a starting point to adjust its dimension anywhere in our ranges.

**TRACK WITH AN RFID CARD**

Identify and transmit information about the location of your bin.

**ADD DOORS**

Bin doors give you easier, more ergonomic access to the contents of your bins.

**EMBOSS YOUR NAME OR LOGO**

Own your bin by embossing your name, logo, text, or graphics on the side.

**SPECIFY CUSTOM COLORS**

Add color to code your inventory or match your brand with a specific color. *Sorry, but vented bins only come in gray.*

**ADD CASTERS**

Casters help improve efficiency, ergonomics, and workflow in manufacturing environments.

**ADD A DRAIN**

Drain liquid from your bins without the hassle of siphoning or the perils of tipping and pouring.



COMPACT & STACKABLE

We've built efficiency into our designs. All bins are stackable and either nest or break down to store inside each other when not in use.



REUSABLE & RECYCLABLE

Bins are engineered from high-density polyethylene which is stable and durable. When their useful lives are over, they're 100% recyclable for zero waste to landfill.



**DOLAV' PRODUCTS.**  
We bring together knowledge, innovation, and technology to help makers and growers store and transport their products better. Talk with us about how we can help you.

WANT TO KNOW MORE?

Visit our online Bin Builder at [www.custom-bins.com](http://www.custom-bins.com) requirements, and we'll provide a free, no-obligation quote on your custom bins.

3710 Sysco Court SE  
Grand Rapids, MI 49512 USA

877-999-6229 (Toll-free in US)  
E-mail: [Info@dolav-usa.com](mailto:Info@dolav-usa.com)  
[www.dolav-usa.com](http://www.dolav-usa.com)

NOT SURE WHAT YOU NEED?

Give us a call, we're happy to talk through the options, 877-999-6229



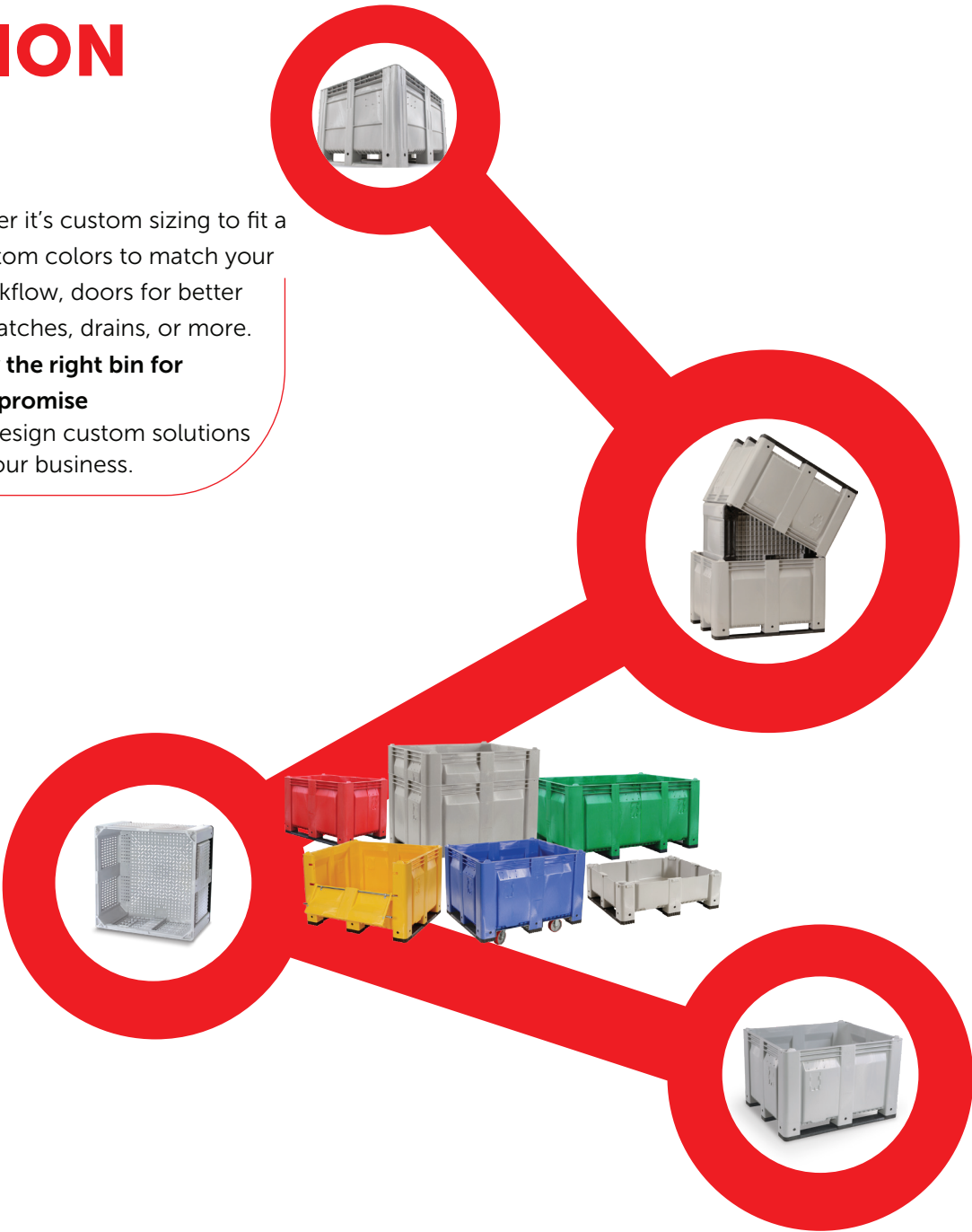
WHEN STANDARD IS JUST THE STARTING POINT





INNOVATION IS IN OUR DNA

**customize solutions** —whether it’s custom sizing to fit a material handling system, custom colors to match your brand, casters to improve workflow, doors for better access and ergonomics, lids, latches, drains, or more. **Our goal is to provide exactly the right bin for the application, without compromise** We give you the flexibility to design custom solutions that are built specifically for your business.



Like all our bins, our **CUSTOM BINS** are...

**BUILT TO LAST** All bins are made from high-density polyethylene (HDPE)—a versatile plastic that’s incredibly strong, but surprisingly lightweight. They’re extremely rugged. Impact-resistant. Temperature- resistant. UV-resistant. Weather-resistant. Rot-resistant. Mold- and mildew-resistant. They stand the test of time in even the harshest environments.

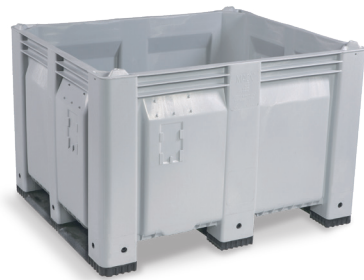
**FOOD-SAFE** Our bins are designed for the most rigorous demands in food processing and agricultural settings. Unlike wood bins, they don’t harbor splinters, pests, pathogens, or mold. They meet all USDA/ HACCP food handling standards. And they can be high-pressure washed, sterilized, and used over and over again for many years.

START WITH A STANDARD BIN

CHOOSE



MACXACE  
48”L x 40”W x 31”H  
Solid or vented



MACX  
40”L x 48”W x 31”H  
Solid or vented

Additional length, width, and height options are available. Please consult your local sales representative.

COLORS

Choose from seven standard colors, or send us any custom color and we’ll match it (minimum orders apply). Vented bins are only stocked in gray.



SIZE

Size is everything when it comes to efficiency in handling, storing, and moving goods. So beyond our standard sizes, we’re happy to customize the height, length, and width of most any bin. Once you’ve selected a standard bin, use that as a starting point to adjust its dimension anywhere in the ranges shown below.

	40” Width x 31” Height	
	<b>LENGTH ONLY ADJUSTMENT</b>	<b>RANGE</b>
	For longer bins	Length 59”–112”
	For shorter bins	Length 117”–136”
	48” Length x 31” Height	
	<b>WIDTH ONLY ADJUSTMENT</b>	<b>RANGE</b>
	For wider bins	Width 49”–136”
	For narrower bins	Width 20”–36”
	48” Length x 40” Width	
	<b>HEIGHT ONLY ADJUSTMENT</b>	<b>RANGE</b>
	For taller bins	Height 36”–77”
	For shorter bins	Height 8”–30” (with caps) Height 14”–30” (welded)
	31” Height	
	<b>LENGTH AND WIDTH ADJUSTMENT</b>	<b>RANGE</b>
	For longer length AND narrower width bins	Length 49”–136” Width 20”–42”
	For shorter length AND narrower width bins	Length 20”–42” Width 20”–36”
	40” Width	
	<b>LENGTH AND HEIGHT ADJUSTMENT</b>	<b>RANGE</b>
	For shorter length AND height bins	Length 20”–42” Height 8”–30”
	48” Length	
	<b>WIDTH AND HEIGHT ADJUSTMENT</b>	<b>RANGE</b>
	For shorter width AND height bins	Width 20”–36” Height 8”–30”

Choose a MACX bin as a starting point. From there, you can alter the size, color, and options to build the exact bin for your needs.

Most people start with a MACX bin, but we can customize virtually any bin to meet your needs. Just give us a call.

SIDE ACCESS

Get ergonomic access to bin contents three ways. Cutout walls, removable walls, or hinged drop doors make it easy to add to, access, or empty your bins.



LIDS

Keep contents clean, contained, and protected from the environment with HDPE structural foam lids available with three closure styles.



DRAINS

Two drain styles let you remove liquid safely without siphoning, tipping, or pouring. Drainplug designs have exterior threading for attachment to a hose or pump system. Bulkhead designs are flush mount with internal threads.



LABELS, CARD HOLDERS & RFID TAGS

Identify contents with adhesive labels, cardholders (available in adhesive mount or welded mount), or RFID tags that work with automated inventory management systems to identify and track bin contents.



RUNNERS

MACX series runners are replaceable and are available on the 40”or 48” side. MACX fit a wide range of material handling systems. MACX bins are all 4-way entry.



CASTERS

Casters improve efficiency, ergonomics, and workflow. Choose from polyurethane-on-iron or stainless steel in 4”, 5”, or 6”. Both types of casters are available in all-swivel for free movement, rigid casters for uni-directional movement, or a combination of both.

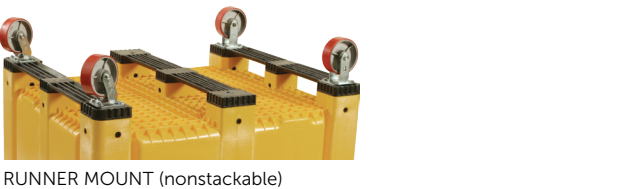
Casters may be mounted through the runner (nonstackable) or through the bottom (stackable) in light- or heavy-load designs.

- MATERIAL**

  - ▶ Polyurethane-on-iron
  - ▶ Stainless steel
- SIZE**

  - ▶ 4”
  - ▶ 5”
  - ▶ 6”
- MOVEMENT**

  - ▶ All-swivel with brake optional
  - ▶ Rigid
  - ▶ 2 Rigid/2 All-swivel with brake



EMBOSSING

Permanently emboss your name, logo, text, or graphics on the side of your bin. Minimum orders apply.

